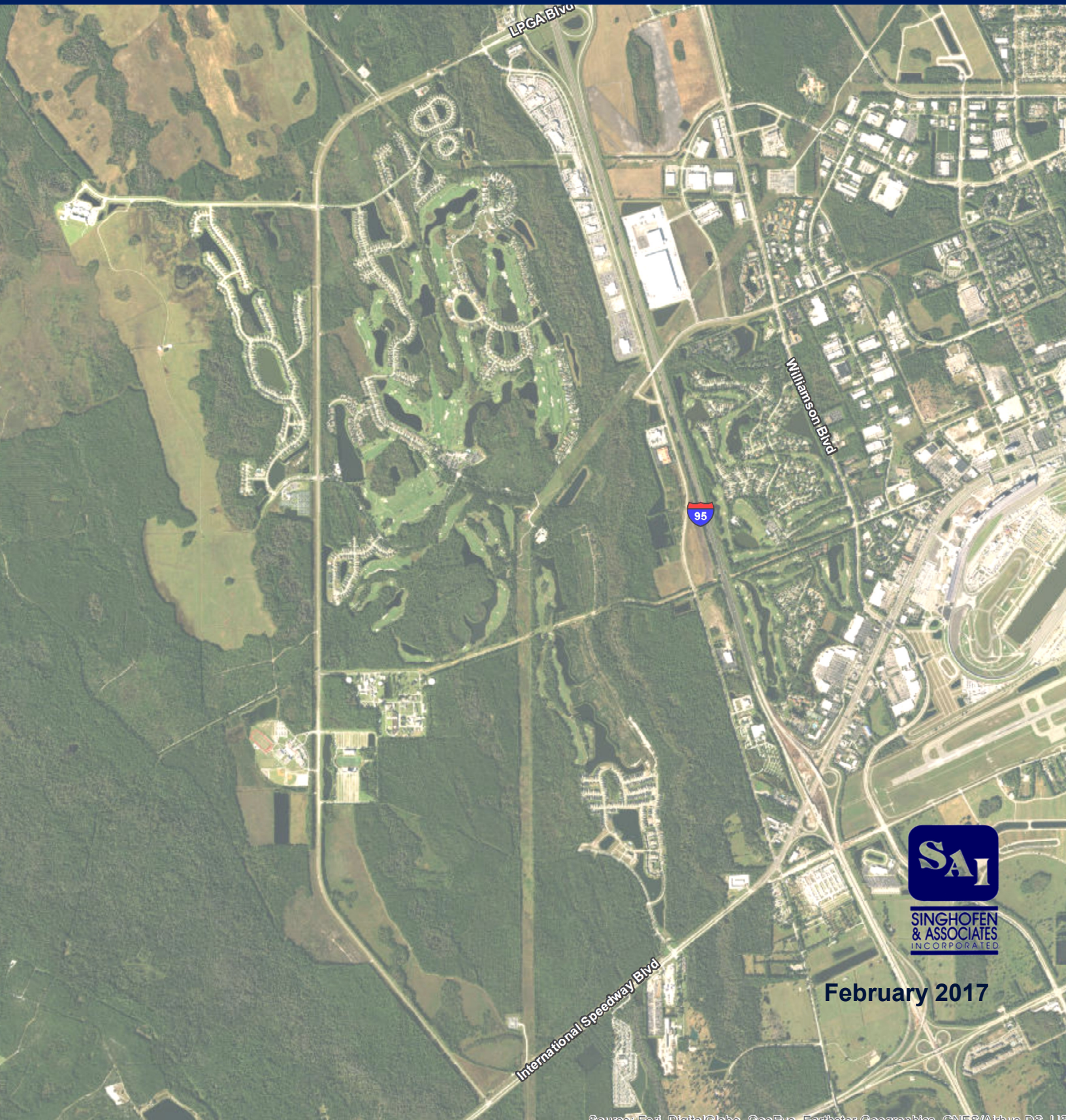


Indigo Community Development District

Public Facilities Report



February 2017

Table of Contents

Purpose and Scope	1
General Information	1
Existing Public Facilities	1
Proposed 7 Year Expansion Plan.....	2
Replacement of Facilities.....	2
Figure 1 Location Map	3

Indigo Community Development District Public Facilities Report

February 2017

Purpose and Scope

In accordance with Florida Statutes Section 189.08, this report has been prepared at the request of the Indigo Community Development District (District) regarding the Special District Public Facilities Report. This report is required to be completed every 7-years and provides general descriptions of the public facilities owned by the District as well as proposed facility expansions within the next 7-year report period.

General Information

The District comprises approximately 2,484 acres and is located in Volusia County, Florida. The District is located west of I-95 and is generally bounded by LPGA to the north and west and International Speedway Boulevard to the south. An aerial map of the District limits is included as **Figure 1**. The District includes a mix of single and multi-family residential housing, commercial development, and recreational use areas. The Indigo Community Development District was established January 3, 1995 as recorded in Volusia County Book 3985, Page 4985.

The majority of improvements within the District have been completed through the issuance of two Capital Improvement Revenue Bonds. Improvements in the northern portion of the District were completed using the Series 1999C while improvements in the south were funded by the Series 2005 bonds.

Existing Public Facilities

District owned improvements to date include certain stormwater management facilities, roadways, potable water and sanitary sewer utilities.

Stormwater Management Facilities

The District wide stormwater system consists of wet detention ponds to capture and treat stormwater runoff from developed areas. Stormwater runoff flows from the developed parcels to the conveyance systems. These conveyance systems generally consist of a series of inlets and pipes which discharge to the ponds. Control structures are typically weirs or inlets with bleed down orifices which discharge to adjacent wetlands and allow the ponds to recover the designed treatment volume. The ultimate discharge location for stormwater within the District is the Tomoka River, located along the east side of the project area. Permitting of the stormwater

management system was issued through St. Johns River Water Management District, Permit #22941-2 (legacy permit #4-127-0204AGC).

Roadways

The District maintains the landscape, irrigation, and lighting for approximately 6.0 miles of roadways. The roadways (pavement, curbs, gutters, etc.) and sidewalks are owned and maintained by the City of Daytona Beach, however the District owns and maintains landscaping, street trees, irrigation, signage, and lighting along the roads and other specific common areas.

Potable Water System

The City of Daytona Beach supplies the District with potable water and fire protection. The potable water system loops throughout the District and is connected to LPGA Boulevard at several locations as well as along International Speedway Boulevard.

The District has constructed most of the potable water system and has turned over the utilities to the City. The District does not operate nor maintain any potable water facilities.

Sanitary Sewer System

The City of Daytona Beach is responsible for sanitary sewer services for the District. The sanitary system consists of gravity sewer mains that discharge to localized pump station. The pump stations are connected to the treatment plant via force mains.

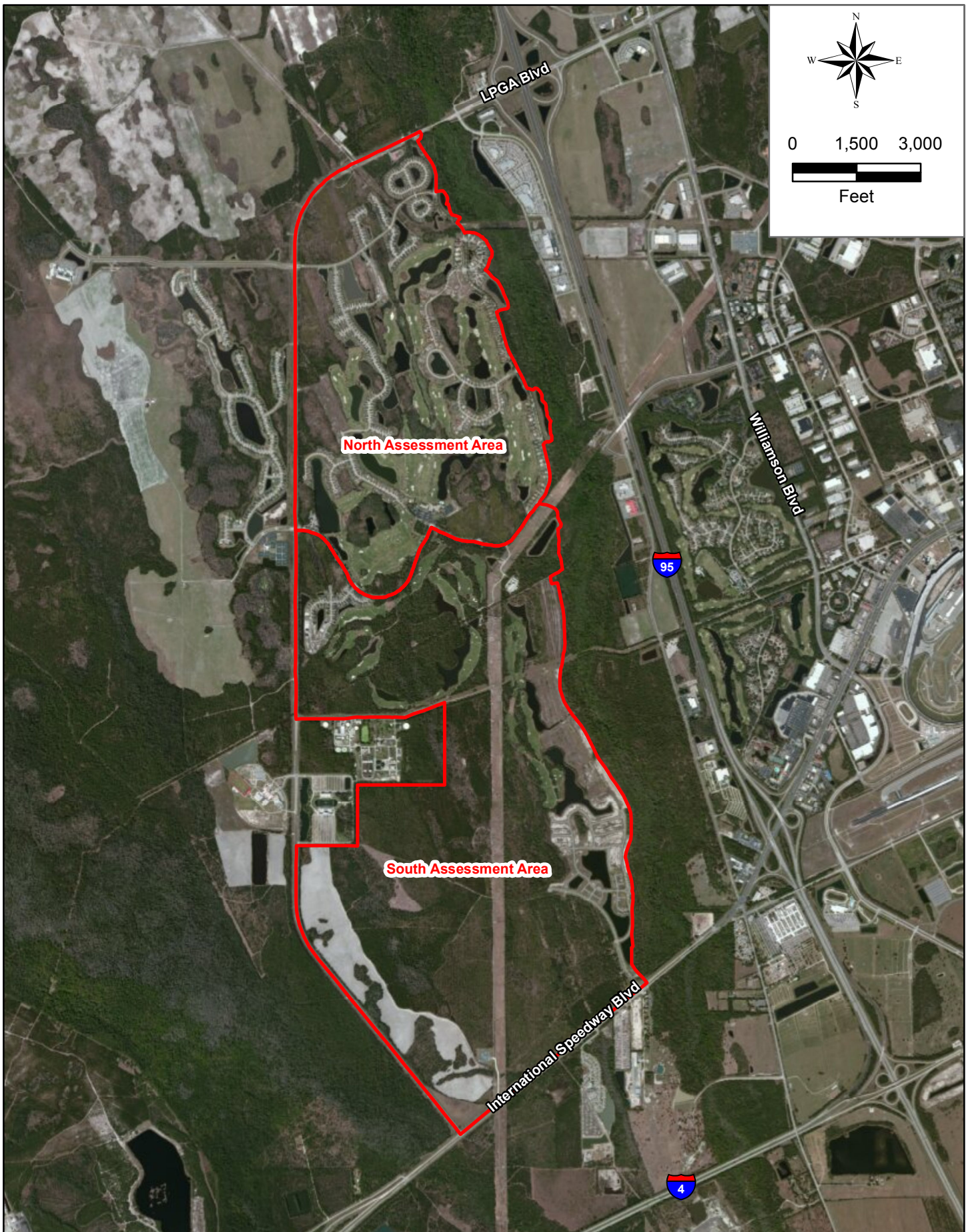
The District has constructed most of the sanitary sewer system and has turned over the utilities to the City. The District does not operate nor maintain any sanitary sewer facilities.

Proposed 7 Year Expansion Plan

The District currently does not have any plans to expand public improvements or community facilities within the next 7 year reporting period.

Replacement of Facilities

The District provides continuous monitoring and maintenance of the existing facilities. Typical repairs generally minor in nature and include damaged or burned out lighting, tree trimming, and damaged stormwater structures. These items are fixed or replaced as they occur; however, there are currently no proposed plans for replacement of adequately functioning facilities.



**INDIGO
COMMUNITY DEVELOPMENT DISTRICT**

LOCATION MAP

**FIGURE:
1**